



Spring, 2011

THE RESERVE

Please Visit Our Website: www.WingfieldReserve.org

A Quarterly Newsletter Published for Members and Friends of Wingfield Reserve

PRESIDENT'S MESSAGE

by Mark Brown, WRHA Board President

Spring greetings to all residents! As we recently held our annual membership meeting, I'll take a moment to recap some of the highlights in this column.

First, we are grateful that Mike Bledsoe, Jim Agnello and Louis Joachim have all sought to be re-elected to the board and such was affirmed at last month's board meeting. All three have been true contributors of time and effort to make Wingfield Reserve a great community in which to live. Please thank each of them for their continued service when you see them.

2010 was a strong year for the Wingfield Reserve Homeowners Association. No dues increase and a contribution to retained earnings were among the financial highlights of the year. Your association is in the "black" with approximately \$137,000 in fund balances for operating and replacement funds. These balances will provide the financial strength to make ongoing needed improvements in our common areas and provide a safety net for capital needs in the event of storms or losses to association assets. In 2010 about 46% of our budget went to Grounds and Maintenance with 22% going toward Security/Legal.

During our annual meeting we heard updates from the Markham Woods Association and the Seminole County Sheriff's team. It was pointed out that proactive communications between residents and the police should continue, and combined with a great Sheriff's team, we

experienced less crime than other communities in the area.

Your board has approved the addition of four security cameras (two at each entrance). Proceeding with installation is contingent on a final statement of work and agreement on final contract for services. There will be no capital assessment for the installation of these cameras, and ongoing expenses are minimal. While these cameras may be a deterrent to crime, or assist in research after a crime occurs, they alone will not replace the money we are investing with the Sheriff's department off-duty officers, or the efforts of the neighborhood watch teams. This extra layer of camera security will assist in further safe guarding our community and the board is pleased to be moving forward with the camera initiative.

The 2011 Wingfield Reserve Homeowners Association officers are as follows:

President:	Mark Brown
Vice President:	Jim Agnello
Treasurer:	John Schaffer
Secretary:	Louis Joachim
Director at Large:	Mike Bledsoe

Lastly, I encourage residents to take a minute and look around your home. It's a great time of the year to spruce up your property!

Best wishes to you and your families this summer. As always, feel free to contact me or any board member with your thoughts regarding association matters.

VACANT HOUSE WATCH

Are you going on a vacation or business trip? If you are, please take advantage of this wonderful FREE program. A few days before you are scheduled to leave, call the Seminole County Sheriff's Office at (407) 665-6650 and ask to set up a House Watch. The operator will take important information from you, such as: When are you leaving? When are you expected back? Is anyone allowed on your property while you are gone? This information will be sent to the Deputy patrolling our community, who will then make periodic checks of your home while you are gone. If anything goes wrong, they'll know who to contact.

**PUT "SET UP A HOUSE WATCH" ON YOUR
TO-DO LIST BEFORE LEAVING!**

HOMEOWNER ASSOCIATION CONSTRUCTION REQUIREMENTS

Architectural Review Board (ARB) approval is valid for twelve months. Construction must start within this period. Violations of these requirements constitute a violation of the Association documents.

- All approved construction activities are to be completed within twelve months from start.
- Construction vehicles, equipment, materials and dumpsters are not to be left in the street during overnight hours.
- Measures are to be taken to prevent all damage to adjacent properties.
- Activities that produce noise that can be heard inside adjacent properties are to be minimized and restricted to the period from 8 a.m. to 6 p.m.
- Outside loud music by contractors is not allowed.
- The street pavement must be kept clean and free of debris.
- It is the homeowner's responsibility to promptly report street pavement and curb damage to Seminole County Public Works.
- Homeowner/Contractor is to make a best effort to minimize damage to the property's landscaping and to restore same before completion of the work.
- Construction vehicles are to be parked on the same side of the street and in front of the construction property without obstructing driveways.

THANK YOU...

To All Of Our Advertisers
Who Make The Publication
Of This Newsletter Possible!

For advertising rates & to reserve
space, please call Joan Ward
at (407) 923-3708.

Wanna Dance?

We Are Your Community
Dance Studio

Ages 2^{1/2}
- Adult

Now Offering:

Ballet • Tap • Jazz
Acro • Hip Hop • Pointe
Pre-School • Modern

Birthday Parties!

Register Today!

407-862-5500

TurningPointeDance.com

Bianca Khoury, Studio Owner



470 EAST LAKE BRANTLEY DRIVE

THE RESERVE is published by the Wingfield Reserve Homeowners Association. Wingfield Reserve HOA does not endorse the products and services advertised in this newsletter. For advertising rates and to reserve space, call Joan Ward at (407) 923-3708. The deadline for article submissions is the 10th of the month preceding the newsletter's quarterly publication.

BOARD OF DIRECTORS

Mark H. Brown	President	(407) 786-2284	mbrown@national.aaa.com
Jim Agnello	Vice Pres.	(407) 786-0904	1stoffthetee@embarqmail.com
Louis F. Joachim	Secretary	(407) 333-0711	ljoachim@doverintl.com
John Schaffer	Treasurer	(407) 829-4931	schaffer.john.g@gmail.com
Mike Bledsoe	Director	(407) 493-3933	ljoachim@doverintl.com

SENTRY MANAGEMENT COMPANY

2180 W. State Road 434 • Suite 5000 • Longwood, FL 32779
Phone: (407) 788-6700 ext. 314 • Fax: (407) 788-7488
Property Manager – Dorothy Dodson • E-mail: ddodson@sentrymgt.com

NEWSLETTER EDITOR

Joan Ward • 538 Sabal Trail Circle • Longwood, FL 32779
(407) 923-3708 • E-mail: jmward123@yahoo.com

ARCHITECTURAL REVIEW

Mark Brown	mbrown@national.aaa.com
Joel Cutler	JoelCutler@msn.com

GROUNDS / PONDS / SWALES

Jim Agnello	1stoffthetee@embarqmail.com
Staci Farley	SGFarley@aol.com

SECURITY / NEIGHBORHOOD WATCH / SOCIAL

Mike Bledsoe	mbledsoe@att.net
Pam Coffman	CffmnBb@aol.com

WEBSITE / NEWSLETTER

John Schaffer	schaffer.john.g@gmail.com
---------------	--

VISIT OUR WEBSITE: WWW.WINGFIELDRESERVE.ORG

10 WAYS TO INCREASE YOUR HOME'S SPRING/SUMMER APPEARANCE & VALUE

1. YOUR LAWN

Many homeowners use lawn services to mow and chemically treat their landscaping, and it may have been a long time since you personally looked at your grass. Now is a good time to “walk” the lawn and really examine it; check for weeds, wild grasses and thin or dead spots.

Action: Note areas of concern and call or write your landscaper to communicate concerns. You will be surprised how your feedback can recalibrate and motivate service providers to pay extra attention to your property. You are paying for quality lawn service.... so why not demand it?

2. PLANTED AREAS AND MULCHED BEDS

We are at the point when weeds and wild grass seeds are sprouting out of control throughout the neighborhood. If your planted areas haven't been weeded or replenished with mulch, the weed conditions will only get worse.

Action: An hour or so invested in removing yellow-flowering “rocket weeds” and other species will save your landscaping from 1000's of emerging seeds and summer weed growth. A quick treatment with “Roundup” or other herbicide will also save weed-control time and money later. Lightly rake mulched surfaces and add an inch or so of fresh material to help you control undesirable growth this summer and into next spring.

3. OUTSIDE LIGHTING

All of our homes have outside lighting fixtures near front entrances and side-entry doors. Mushroom or similar light fixtures illuminate many residences in the evening.

Action: Take a look at the condition and cleanliness of your outside lighting to see if there are damaged fixtures, broken wires or burned-out bulbs. A quick treatment with glass cleaner and a paper towel will also sharpen night-time appearances.

4. PLANTS / BUSHES

Once again, the winter weather has cold-damaged even protected plants. An area landscaper recently mentioned that their highest volume job request was to “replace the plants that were killed in December with cold-hardy plants for the coming year”.

Action: After checking your lawn, look at surrounding landscaping for flowers or shrubs that have been killed or seriously cold-damaged. Replace these plants with drought- and cold-resistant species recommended by your landscaper or garden store. The right replacement plants will survive and thrive for years.

5. STORAGE OF TOOLS, TOYS AND OUTSIDE ITEMS

Even the nicest-looking homes can suffer from a winter accumulation of gardening equipment, flower pots, toys or trash containers that are supposed to be stored in garages or screened from view.

Action: Examine your property from the street and your neighbors' perspectives. Are there items that can be hung up in the garage, stored in a fence-enclosed area or maybe even put out with the next trash collection? De-cluttering can simplify your life and improve the look of your property.

6. MAILBOXES

The majority of mailboxes in our community are over 25 years old. Some are leaning crookedly, others are faded, corroded or lack identification numerals which are important to delivery personnel and emergency service responders.

Action: Inspect your mailbox structure and enclosure. Will it serve you better with a new coat of paint or reflective numerals from one of the home supply stores? Leaning brick or masonry structures can be straightened with minimal effort by an experienced contractor... before the structure is further damaged or falls over.

7. Driveways / Walkways

The pollen and dust that characterize our spring season become “food” for mold and mildew as the summer rains resume. Current accumulations of dirt and debris can lead to stained and slippery surfaces in the months ahead.

Action: Check your driveway, walkways and pool deck surfaces for signs that they need a cleanup. An afternoon's work with your pressure washer (or a pressure cleaning contractor) will improve your home's appearance and safety throughout the summer.

8. Front Door / Trim

The front and side entries are two of your home's most noticeable features. Accumulation of dust or mildew can dull the appearance of painted or stained surfaces as well as paved or tiled walking areas.

Action: See what your front door and entrance areas look like to friends and visitors approaching your home. Could a simple hose-washing improve the appearance? Would a little sanding and repainting help preserve and

(continued on page 4)

10 WAYS TO INCREASE YOUR HOME'S SPRING/SUMMER APPEARANCE & VALUE

(continued from page 3)

protect surfaces that will be expensive to repair later?

9. Outside Play Structures and Basketball Goals

A number of lots contain "approved" play structures which have become mildewed, faded or otherwise deteriorated. Sabal Point deed restrictions specify that such equipment should be maintained in "like new" condition.

Action: Examine any play equipment on your property and see if it needs a cleanup, painting or new netting. In some longer-term families with grown children, structures may no longer be in use. Your lot might look better if unused equipment is removed.

10. Major Tree Trimming

While tree trimming is not always inexpensive, it can be very cost effective through reduced risk of hurricane damage and less shade retarding of planted areas.

Action: Now may be a good time to contact experienced tree service providers about trimming or mistletoe removal before the trees are in full summer bloom. Professional reduction of upper tree growth is great preparation for hurricane season because it reduces wind resistance and lets through more sunlight for healthy lawns.

WINGFIELD RESERVE LANDSCAPE COMMITTEE NEWS

The landscape in the common areas looks good after the winter. Some shrubbery is brown but is turning green as Spring arrives. The main problem seems to be broken sprinkler head in the cul de sacs. Repair on these sprinkler heads has been ongoing, repairing the same ones again and again. This is mostly due to cars, trucks, trailers parking up on the grass.

Some spring cleanup will be occurring at the South entrance and annuals are to be planted soon. Remember to water your lawn two times per week. Even numbered residences can water on Sunday and Thursday and odd numbered residences can irrigate on Wednesday and Saturday.

Staci Farley, Landscape Committee Chairperson

SEMINOLE COUNTY TO REPAVE DEER HOLLOW

Wingfield Reserve's long time residents will remember that ten years ago the county repaved our neighborhood's streets in our neighborhood, except for Deer Hollow. The condition of Deer Hollow has deteriorated significantly since that time and the Board has been requesting that the county repave some of the streets in our development. Spot repairs were completed earlier this year and according to Harry Raysin, program manager for street paving in Seminole County, Deer Hollow and other parts of Wingfield Reserve are scheduled for repaving sometime this summer or early fall.

ARE YOU TIRED OF "NO SHOW" SERVICE?

Call

ServiceOne
AIR CONDITIONING

(407) 331-6589

www.ServiceOneAC.com

Owner: Bill Gouty

License #CAC1813760

FREE
2-YEAR JOB LOSS PROTECTION PLAN
AND 1-YEAR HOME WARRANTY



**PROVIDED BY PREFERRED
LENDER TO BUYERS . . .**

CALL FOR DETAILS!

JAN FERGERSON

CRS, GRI, ePRO, REALTOR

*"SPECIALIZING IN SEMINOLE
COUNTY'S FINEST ADDRESSES"*

(407) 579-4815



Visit www.buyandsellwithjan.com

365 Wekiva Springs Road, #151
Longwood, FL 32779

KEY CONTACT INFORMATION

WINGFIELD RESERVE HOMEOWNER CONTACTS

Architectural Review (ARB)	Dorothy Dodson	(407) 788-6700 ext. 314	ddodson@sentrymgt.com
Landscaping Committee	Staci Farley	(407) 862-6640	sgfarley@aol.com
Ponds Maintenance	Dorothy Dodson	(407) 788-6700 ext. 314	ddodson@sentrymgt.com
WRHA E-Mail Updates	Mike Bledsoe	(407) 493-3933	WRHA@mail.com
WRHA Irrigation System	Dorothy Dodson	(407) 788-6700 ext. 314	ddodson@sentrymgt.com
WRHA Newsletter	Joan Ward	(407) 774-6008	jmward123@yahoo.com
WRHA Payment of Dues	Dorothy Dodson	(407) 788-6700 ext. 314	ddodson@sentrymgt.com
WRHA Street Signage	Dorothy Dodson	(407) 788-6700 ext. 314	ddodson@sentrymgt.com

EMERGENCY CONTACTS

Emergency	(Police, Fire, Ambulance)	911
Non-Emergency	Sheriff's Department	(407) 665-6650

UTILITY CONTACTS

Cable	Bright House Networks	(407) 291-2500
Phone Service	Embarq	(800) 339-1811
	AT&T	
Water Issues	Utilities, Inc. of Florida	(407) 869-1919
Flagging Utilities	Sunshine	(800) 432-4770
Street Light Repair	Progress Energy	(800) 700-8744
Power Outage	Progress Energy	(800) 228-8485

COUNTY SERVICES

Sidewalks Need Repair (Seminole County)	(407) 665-5609
Street Repair (Seminole County)	(407) 665-5687
Power Outage (Seminole County)	(407) 665-5687
Garbage/Trash (Solid Waste Management)	(407) 665-8200
Special Garbage Pickup (Waste Mngmt. Orlando)	(800) 829-7370

WILDLIFE & DOMESTIC ANIMALS

Aggressive Wildlife (Florida Fish and Game)	(800) 342-9620
Bear Sightings (Bear Aware)	(407) 774-8007
Domestic Animal Complaints (Animal Control)	(407) 665-5201

WINGFIELD RESERVE CRIME PREVENTION TIPS

Keep shrubs around doors and windows pruned so they aren't used by a potential burglar for cover while attempting to break into your home. Consider installing outdoor floodlights or motion lights outside. Make residential sliding doors safer by installing locks on the inside track to prevent them from sliding. Never hide a key under your door mat or under a flower pot, etc. Burglars know these favorite spots. Always BE ALERT and call the non emergency number (407) 665-6650 or 911 to report anything that seems out of place. The Sheriff's Office perform residential security surveys. A quick inspection provide homeowners' very valuable suggestions to better secure their property. For more information, please call (407) 665-6748 or (407) 665-6977.

This information was provided courtesy of the Seminole County Sheriff's Office.

A HEARTY WELCOME TO OUR NEWEST RESIDENTS

Terry & Natalie Adams
2111 Royal Fern Court

NATIONAL BUILDING SERVICES, INC.
Serving Orlando Since 1981

COMMERCIAL PROPERTY CLEANING AND MAINTENANCE

- Residential & Commercial Property Improvement Division
- Office & Home Cleaning
- Carpet Cleaning
- Window Cleaning
- Pressure Cleaning - Drives, Sidewalks, Pool Decks
- Safe Roof Pressure Clean
- Handyman Services
- Painting & Repairs
- Certified Mold Remediation

(407) 774-9007

REFERENCES • LICENSED
BONDED • INSURED mfreche@cfl.rr.com

CASINO NIGHT 2011

Wingfield Reserve held its **THIRD ANNUAL CASINO NIGHT** on January 22, 2011 at the home of Mr. and Mrs. Louis Joachim. Close to 100 neighbors got together to eat and share a wonderful evening. This has become one of the biggest social events we host. Next year's Casino Night will be moved until sometime in April or May to move to warmer weather.

Please email WRHA@mail.com if you are interested in helping with Social Committee events.



LET THERE BE LIGHT!

Please contact Progress Energy at 1-800-228-8485 if you notice street lamps in the Wingfield Reserve community that are out or working improperly. You can also fill out a request for streetlight repair electronically by visiting their website at <https://secure.progress-energy.com/sid/custservice/fla/selfservice/electric/streetlight>. They'll send a technician out to remedy the problem as soon as possible.

S&W KITCHENS, INC.
BATHS, WET BARS & MORE

Where Wishes & Dreams Come True

Please visit our fully equipped showroom and allow one of our talented designers to help you create your dream kitchen.

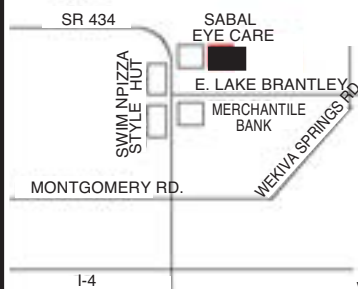
**461 East Highway 434 • Longwood
(407) 339-5911**



"Protecting the miracle of sight!"
Dr. Christopher Pearson, O.D.
Board Certified Optometric Physician

(407) 869-4733

Eye Care For The Entire Family



At The Corner
of East Lake Brantley
& State Road 434

105 E. Lake Brantley Dr.
Longwood, FL 32779
Visit www.sabaleyecare.com

LANDSCAPING CORNER

WHAT COMMON PESTS AFFECT THE HEALTH OF MY LAWN AND HOW CAN I IDENTIFY THE TYPE OF PEST PROBLEM?

Bright green lawns provide comfortable living and free food for turf pests. Lawns harbor many insects, but only a few are really harmful. Taking the time to become familiar with pests common to your variety of turf before the growing season begins helps insure that your lawn remains healthy.

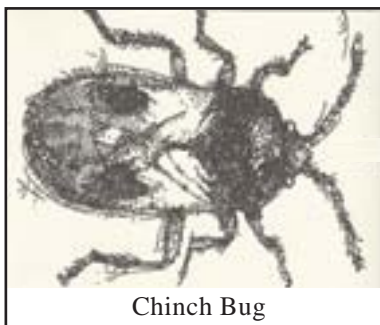


Mole Cricket

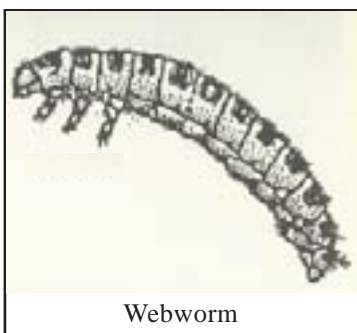
Mole crickets tunnel through bahia turf, feeding on and disrupting root growth. These pests won't go away on their own until the turf is destroyed. Gardeners will notice a few mole crickets in the spring when the bugs seek out new feeding grounds. These fully mature crickets should be tolerated unless damage to turf is significant. By May, however, mole crickets will be laying eggs that begin the new and ravenous generation. Gardeners can obtain the

best control of this invasion May through late summer with baits or sprays specially labeled for mole crickets.

Chinch bugs are on the prowl as soon as the weather warms up. Although chinch bugs have been relatively easy to control in the past, a new pesticide-resistant population is emerging. If one or two applications of the common insecticides don't affect these pests, switch to a different type of insecticide or contact a local pest control professional.



Chinch Bug



Webworm

Sod webworms retreat to South Florida for the winter, but each spring begin the migration back to Central and North Florida. They can arrive as early as the first week of July. Sod webworms chew grass blades, giving lawns a closely mowed look.

Webworms arrive as brown dingy moths which soon lay eggs. Control at this stage is futile – wait until the eggs hatch in about two weeks and spray the caterpillars.

Webworms prefer St. Augustine turf but will also feed on other Florida grasses.

Insecticides should give good control of sod webworms but must be applied frequently. Eggs are often not controlled and the moths infiltrate from neighboring lawns to restart infestation. Summer is a difficult time to control the caterpillars. Rain washes pesticides off the grass, sunlight decomposes the chemicals and frequent mowing removes the insecticide. When infestations are heavy, expect to retreat in just a few weeks.

Do-it-yourself pesticide application takes professional techniques. It is not a time for bare feet. Wear boots, rubber gloves and long sleeves. Protective eye wear is also a good idea, as the eyes are very susceptible to windblown spray.

CONTACTING THE SHERIFF'S OFFICE

To report suspicious activity, please call the Sheriff's Office at (407) 665-6650 or in an emergency dial 911. The deputies that patrol Wingfield Reserve are:

Anthony Tomeo	Office:	(407) 665-1423
	Mobile:	(407) 402-0034
	Email:	atomeo@seminolesheriff.org
Jarritt Negri	Mobile:	(407) 402-2890
	Email:	jarrittnegri@seminolesheriff.org
Shannon Miller	Mobile:	(407) 402-3111
	Email:	smiller@seminolesheriff.org
Rusty Montgomery	Mobile:	(407) 474-4835
	Email:	rmontgomery@seminolesheriff.org
James Ingram	Mobile:	(407) 468-3035
	Email:	jingram@seminolesheriff.org
Mike Hawkins	Mobile:	(407) 474-5223
	Email:	mhawkins@seminolesheriff.org

M cFADDEN ROOFIN **G**
Roofing and Repair Specialists

Family Owned Since 1977

ALL TYPES OF ROOFING & REPAIR

Licensed & Insured • CCC1326427

(407) 682-9082

THE RESERVE

Wingfield Reserve HOA C/O
Sentry Management Inc.
2180 West State Road 434, Suite 5000
Longwood, FL 32779

PRSR STD
U.S. POSTAGE
PAID
MID-FL, FL
PERMIT NO. 290

Or Current Resident

Dover
INTERNATIONAL
REALTY, INC.

RESIDENTIAL • COMMERCIAL SALES & LEASING
MANAGEMENT • BUSINESS BROKERS



Call Louis F. Joachim for your
Free Real Estate Portfolio Review
or to list your home with Dover International.

Visit our website: www.DoverIntl.com

1307 S. INTERNATIONAL PARKWAY • SUITE 1091
LAKE MARY, FL 32746

(407) 333-0711

FAX: (407) 333-0366 • E-MAIL: DOVER@MPINET.NET



SWEETWATER SUMMER DAY CAMP

On Beautiful Lake Brantley
June 6 – July 29
A Busy Day – Every Day
**For 2 year-olds through children
entering 9th grade**
Swimming • Canoeing • Art
Music • Science Explorations
Sports & Much More!

For Information, Call

(407) 788-CAMP (2267)

www.SweetwaterDayCamp.org